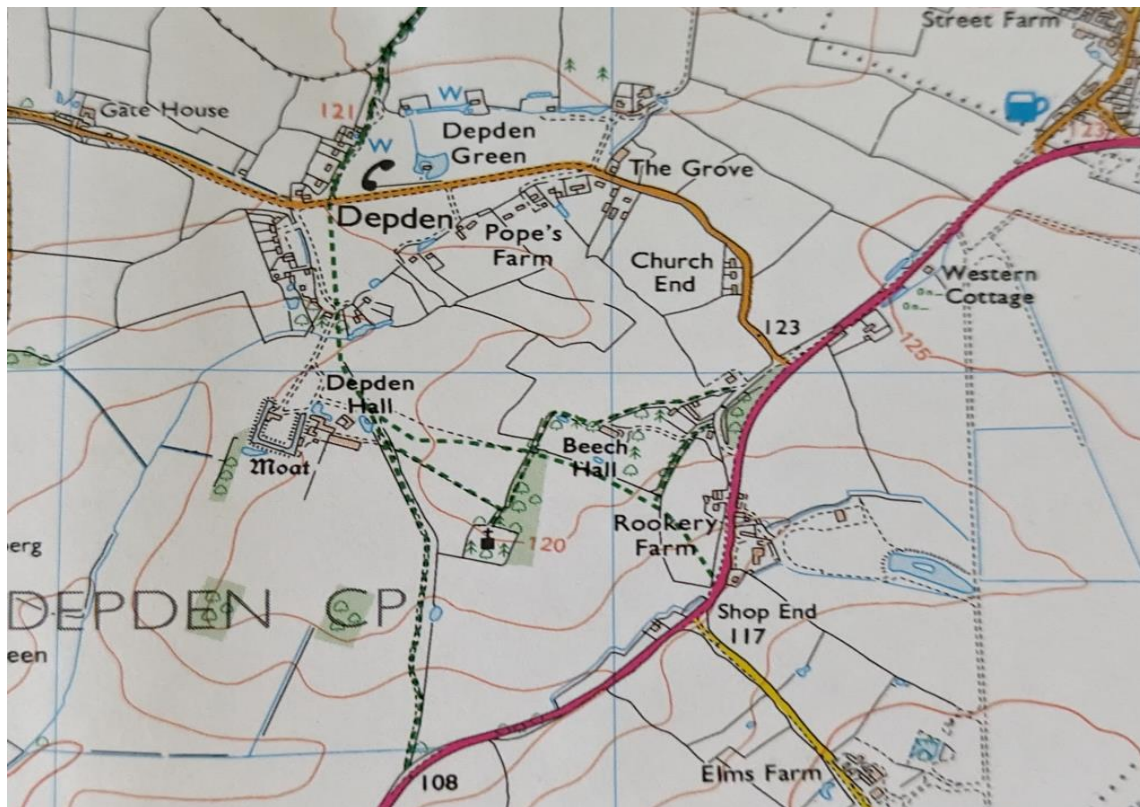


Depden Parish Council Footpath Report March 9th 2024



Footpath 1: (A143 through to Depden Green).

Starts from the A143 over a footbridge onto a concrete roadway followed by a Grassy headland towards the Village Green. This is all clear until you cross over the bridge where 3-4 trees have fallen making it more difficult to navigate





Fallen Trees on Footpath 1 making it more difficult to navigate after crossing the bridge near to Depden Green

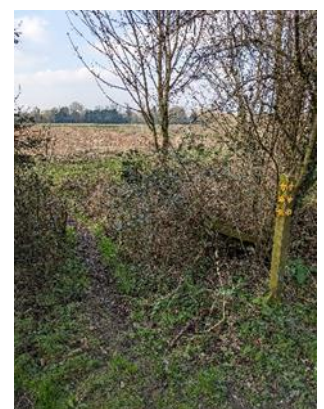
Footpath 2: (Footpath from old A143 road up to the Church).

This Footpath starts from the old A143 road and ends up at the church. The Footpath to the church is all clear, well maintained, although muddy in places. (Flowering Cherry trees in full blossom at the Church)



Footpath 3: (From A143 road behind Rookery Farm, across a field Joining Footpath 1 at Depden Hall)

Footpath is in good condition across open meadows and farmland. After crossing the ditch, the path across the field is not clearly defined although it is all clear.



Footpath 4: (From near the Church, across the field joining Footpath 1 at Depden Hall).

A short stretch of footpath from near the church heading towards the Village Green via Footpath 1. The path across the field is not clearly defined although it is all clear.



Footpath 5: (From Beech Hall behind Highweek joining Footpath 3)

Starting from the old A143 near to Beech Hall passing behind the Garden centre and joining footpath 3. This footpath is in good condition, well maintained and clearly signposted, although muddy in places.



(Peter Elbens (09/03/2024))