

Depden Parish Council Footpath Report May 9th 2022



Footpath 1: (A143 through to Depden Green)

Footpath all clear and well maintained and clearly marked



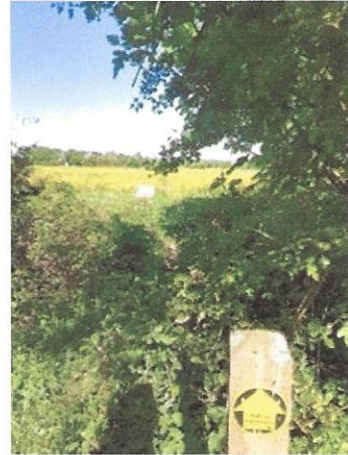
Footpath 2: (Footpath from old road up to Church)

Footpath up to the church is all clear and dry under foot



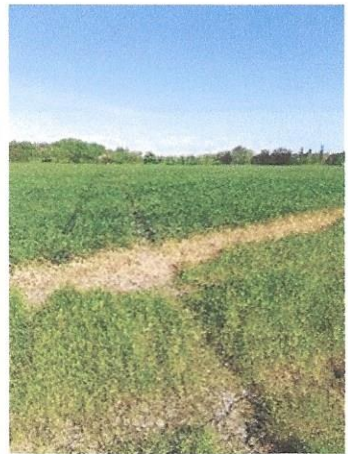
Footpath 3: (From A143 behind Rookery Farm, across field Joining Footpath 1 at Depden Hall)

This footpath is in good condition. Field is clear and passable, Footpath across the field is clearly defined



Footpath 4: (Fom near the Church, across the field joining Footpath 1 at Depden Hall)

All clear and passable, Footpath across field is clearly defined and easy to follow footpath.



Footpath 5: (From Beech Hall behind Highweek joining Footpath 3)

All clear with no issues, well maintained and clearly signposted.

